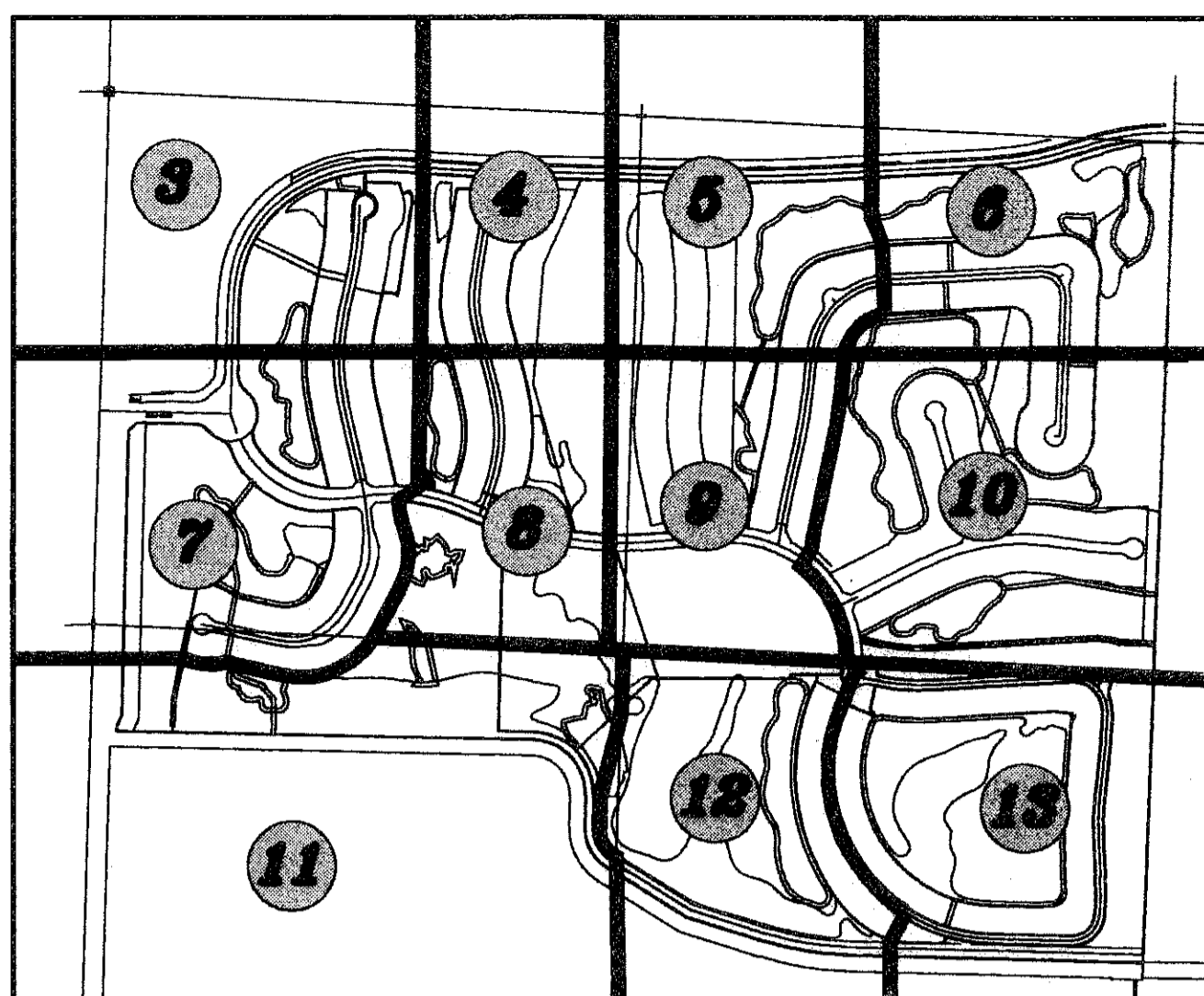


# FRENCHMAN'S RESERVE PCD - GOLF COURSE

BEING A REPLAT OF TRACT G AND A PORTION OF TRACT C, FRENCHMAN'S RESERVE PCD - PLAT ONE, AS RECORDED IN PLAT BOOK 92, AT PAGE 11, TRACT OS1, FRENCHMAN'S RESERVE PCD - PLAT "A", AS RECORDED IN PLAT BOOK 92, AT PAGE 194, TRACTS OS1 AND OS4, FRENCHMAN'S RESERVE PCD - PLAT "B", AS RECORDED IN PLAT BOOK 96, AT PAGE 102, A PORTION OF TRACT OS2, FRENCHMAN'S RESERVE PCD - PLAT "D", AS RECORDED IN PLAT BOOK 93, AT PAGE 123, TRACTS "G1" AND "G2", FRENCHMAN'S RESERVE PCD - PLAT E, AS RECORDED IN PLAT BOOK 101, AT PAGE 1, TRACTS A, B, C, D, E, H, OS1 AND OS2, FRENCHMAN'S RESERVE PCD - PLAT F, AS RECORDED IN PLAT BOOK 93, AT PAGE 82, TRACTS C AND D, FRENCHMAN'S RESERVE PCD - CLUBHOUSE, AS RECORDED IN PLAT BOOK 94, AT PAGE 138, PUBLIC RECORDS, PALM BEACH COUNTY, FLORIDA.

LYING IN SECTION 31, TOWNSHIP 41 SOUTH, RANGE 43 EAST,  
CITY OF PALM BEACH GARDENS, PALM BEACH COUNTY, FLORIDA.

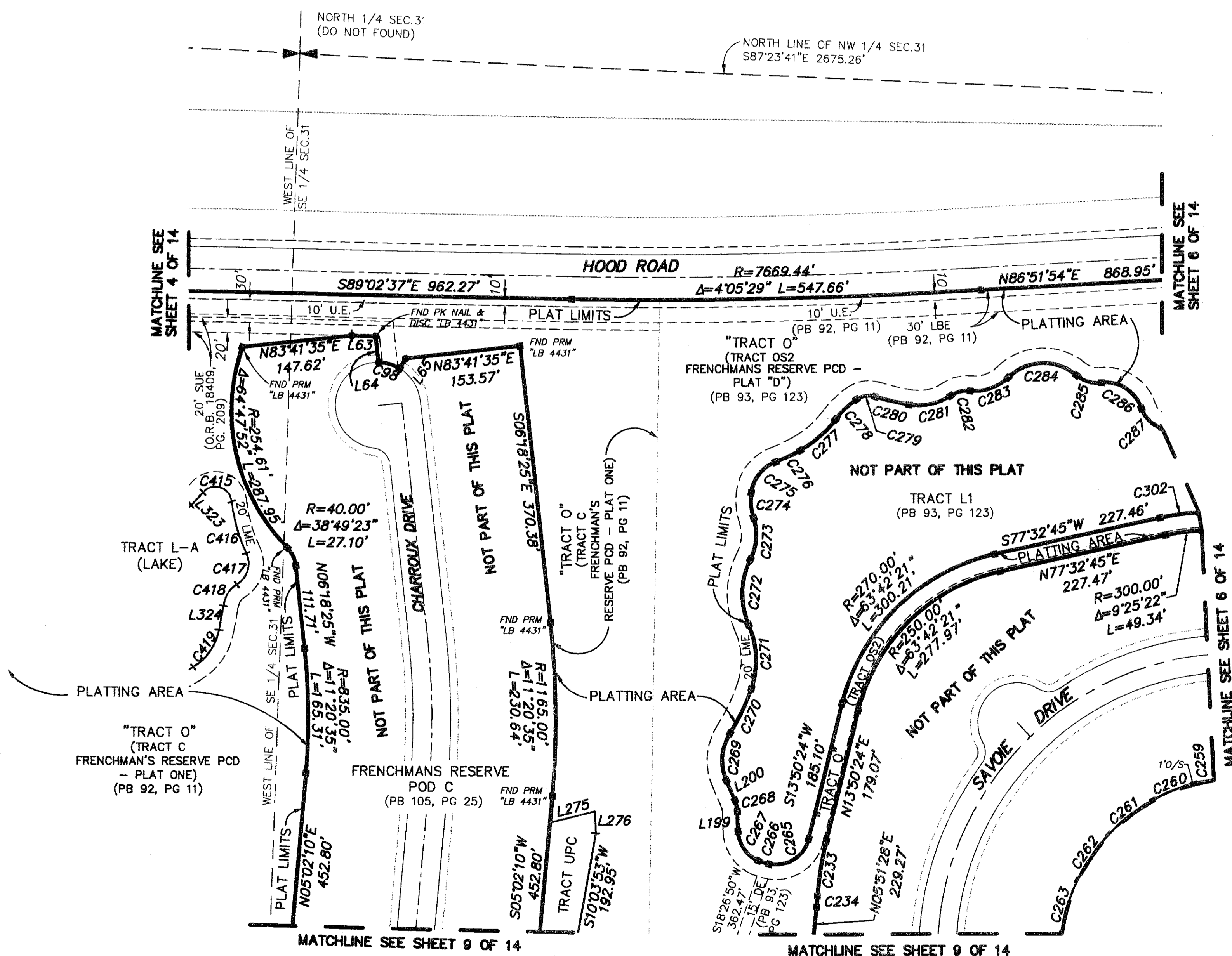
OCTOBER, 2008 SHEET 5 OF 15



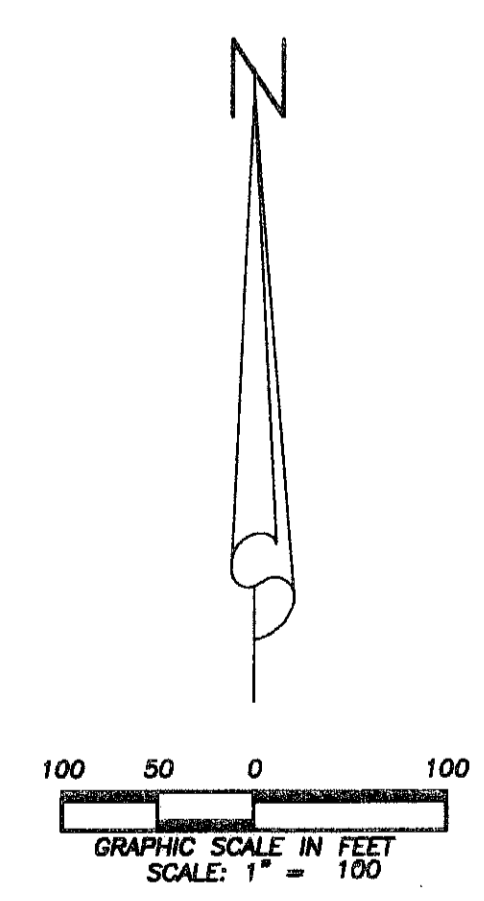
KEY MAP  
NOT TO SCALE

LINE TABLE		
LINE	BEARING	DISTANCE
L63	S89°02'36"E	32.00'
L64	N06°18'25"W	34.77'
L65	S30°35'37"W	15.33'
L199	S02°07'43"E	28.39'
L200	N23°35'06"W	29.26'
L275	N75°58'38"E	61.81'
L276	S02°08'56"E	29.03'
L323	S42°31'12"W	23.20'
L324	N10°15'27"E	32.58'

CURVE TABLE					
CURVE	RADIUS	CENTRAL ANGLE	LENGTH	CHORD BEARING	CHORD DISTANCE
C98	57.00'	29°50'43"	29.69'	N74°19'45"W	29.36'
C233	453.82'	9°23'19"	74.36'	S09°08'44"W	74.28'
C234	453.82'	1°52'07"	14.80'	S03°31'01"W	14.80'
C259	150.00'	10°07'11"	26.49'	S79°30'43"W	26.46'
C260	242.03'	14°05'41"	59.54'	S67°55'40"W	59.39'
C261	242.03'	17°40'19"	74.65'	S52°02'40"W	74.36'
C262	242.03'	17°41'23"	74.73'	S34°21'49"W	74.43'
C263	242.03'	17°43'15"	74.86'	S16°39'30"W	74.56'
C265	45.00'	87°38'51"	68.84'	N57°39'50"E	62.32'
C266	75.33'	11°47'54"	15.51'	S72°36'48"E	15.48'
C267	45.00'	64°35'07"	50.73'	S34°25'17"E	48.08'
C268	40.00'	21°27'22"	14.98'	N12°51'24"W	14.89'
C269	66.00'	56°38'25"	65.24'	S04°44'07"W	62.62'
C270	265.21'	14°09'13"	65.52'	N25°58'42"E	65.35'
C271	117.00'	43°00'07"	87.81'	N02°35'58"W	85.76'
C272	101.62'	50°56'26"	90.35'	S01°22'12"W	87.40'
C273	73.00'	45°08'53"	57.52'	N04°15'59"E	56.05'
C274	74.84'	25°51'49"	33.78'	S05°22'33"E	33.50'
C275	50.00'	62°13'20"	54.30'	S38°40'01"W	51.67'
C276	229.55'	9°07'44"	36.57'	N65°12'49"E	36.53'
C277	153.00'	23°43'04"	63.33'	N48°47'25"E	62.88'
C278	112.78'	19°39'44"	38.70'	S46°45'46"W	38.51'
C279	30.00'	50°53'35"	26.65'	S82°02'25"W	25.78'
C280	338.29'	7°50'56"	46.34'	S76°26'15"E	46.31'
C281	78.00'	42°52'32"	58.37'	N78°12'01"E	57.02'
C282	40.00'	39°03'50"	27.27'	S76°17'39"W	26.75'
C283	63.80'	49°40'52"	55.32'	N70°59'09"E	53.61'
C284	69.00'	83°37'19"	100.70'	S87°57'22"W	92.00'
C285	44.00'	46°38'47"	35.82'	S73°33'22"E	34.84'
C286	50.00'	78°44'54"	68.72'	N57°30'18"W	63.44'
C287	40.00'	57°29'39"	40.14'	S46°52'41"E	38.48'
C302	320.00'	9°25'21"	52.63'	S82°15'26"W	52.57'
C415	22.00'	132°23'59"	50.84'	N72°23'15"W	40.26'
C416	213.00'	19°14'51"	71.55'	S15°48'40"E	71.22'
C417	33.00'	83°58'50"	48.37'	N16°33'19"E	44.15'
C418	36.49'	45°44'41"	29.13'	S35°56'08"W	28.36'
C419	73.23'	48°32'27"	62.04'	N34°31'40"E	60.20'



- LEGEND:
- CL = CENTERLINE
  - DE = DRAINAGE EASEMENT
  - DB = DEED BOOK
  - Δ = DELTA
  - FND = FOUND
  - FPL = FLORIDA POWER & LIGHT
  - IP = IRON PIPE
  - IRC = IRON ROD WITH PLASTIC CAP
  - L = LENGTH
  - LAE = LIMITED ACCESS EASEMENT
  - LBE = LANDSCAPE BUFFER EASEMENT
  - LSE = LIFT STATION EASEMENT
  - LME = LAKE MAINTENANCE EASEMENT
  - LB = LICENSE BUSINESS
  - ORB = OFFICIAL RECORD BOOK
  - O/S = OFF SET
  - PSCO = PALM BEACH COUNTY
  - (P) = PLAT
  - PB = PLAT BOOK
  - PK = PARKER KAYLON NAIL
  - PRM = PERMANENT REFERENCE MONUMENT
  - PSUE = PRIVATE SPECIFIC USE EASEMENT
  - R = RADIUS
  - R/W = RIGHT-OF-WAY
  - SUE = SEACOAST UTILITY EASEMENT
  - UE = UTILITY EASEMENT
  - WBE = WETLAND BUFFER EASEMENT
  - WE = WATER AND SEWER EASEMENT
  - = SET PERMANENT REFERENCE MONUMENT (PRM) "LB 7055" UNLESS OTHERWISE NOTED
  - = SET PK NAIL AND DISC "LB 7055" UNLESS OTHERWISE NOTED



**Wantman Group, Inc.**  
 Engineering ♦ Surveying ♦ Mapping  
 2035 VISTA PARKWAY, SUITE 100  
 WEST PALM BEACH, FL 33411  
 (561) 687-2220 phone (561) 687-1110 fax  
 CERT No. 6091 - LB No. 7055  
 THIS INSTRUMENT WAS PREPARED BY DEREK G. ZEMAN, P.S.M.  
 PROFESSIONAL SURVEYOR AND MAPPER, LICENSE NO. 5655  
 FOR THE FIRM: WANTMAN GROUP, INC.

STATE OF FLORIDA  
 COUNTY OF PALM BEACH  
 THIS PLAT WAS FILED FOR  
 RECORD AT \_\_\_\_\_ M.  
 THIS \_\_\_\_\_ DAY OF \_\_\_\_\_  
 A.D. 2008 AND DULY RECORDED  
 IN PLAT BOOK \_\_\_\_\_ ON  
 PAGES \_\_\_\_\_ AND \_\_\_\_\_  
 SHARON R. BOCK  
 CLERK AND COMPTROLLER  
 BY: \_\_\_\_\_  
 DEPUTY CLERK

77